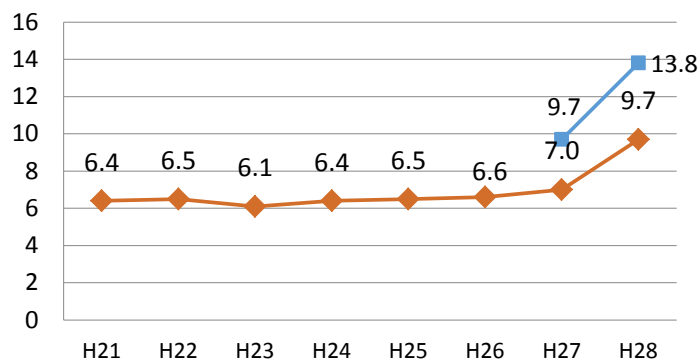
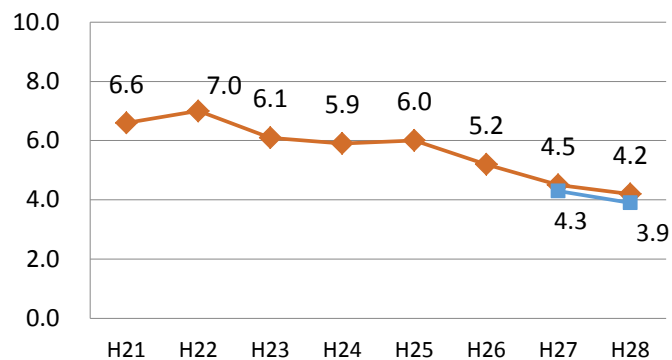


胃がん検診受診率



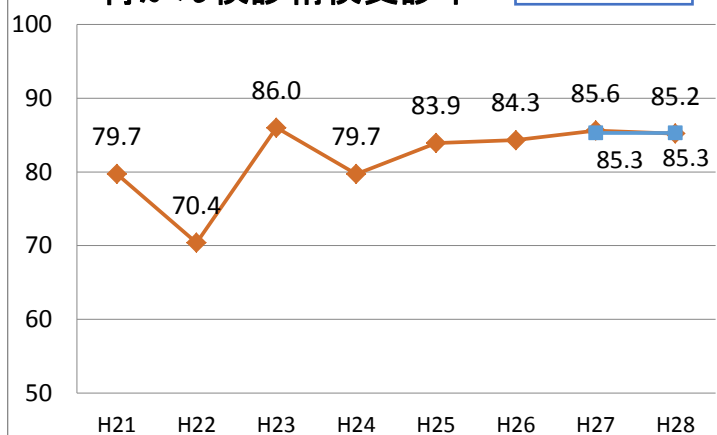
胃がん検診要精検率

11.0%以下



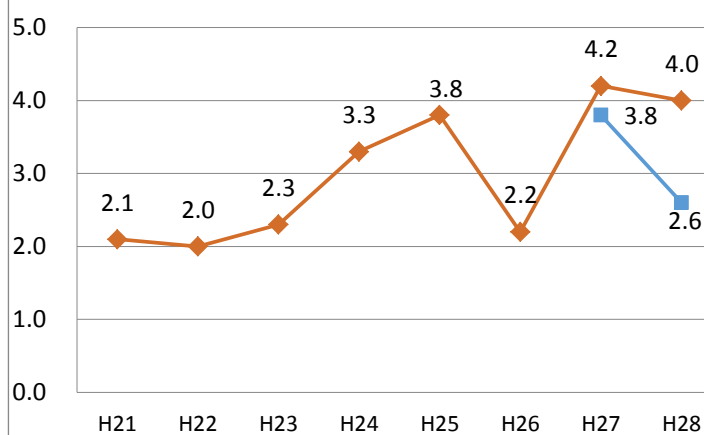
胃がん検診精検受診率

70.0%以上



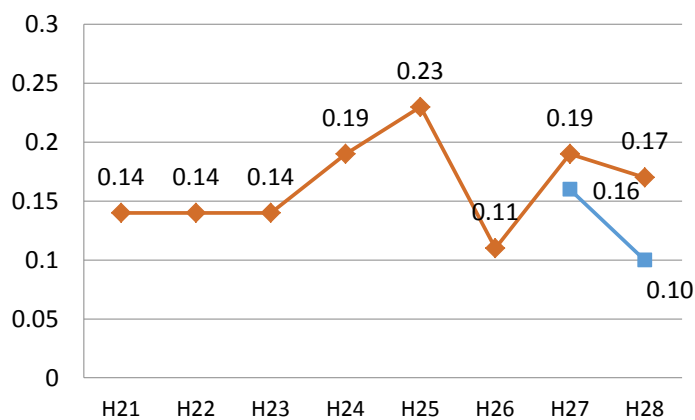
胃がん検診陽性反応適中度

1.0%以上



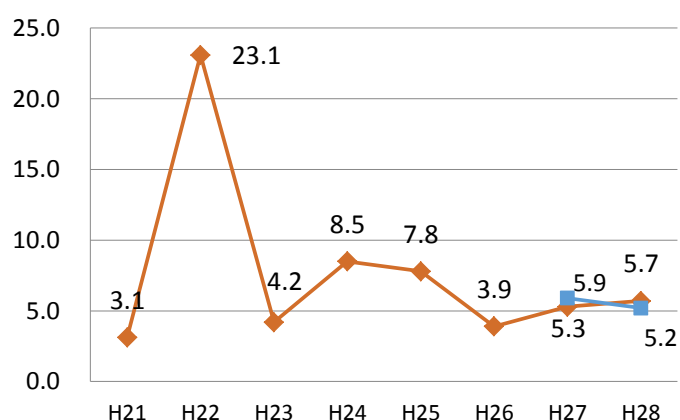
胃がん検診がん発見率

0.11%以上



胃がん検診未把握率

10.0%以下

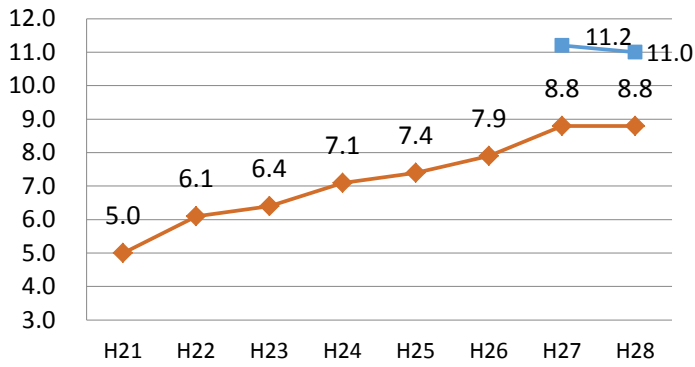


◆ 40歳以上

■ 40~74歳 (検診受診率:40~69歳)

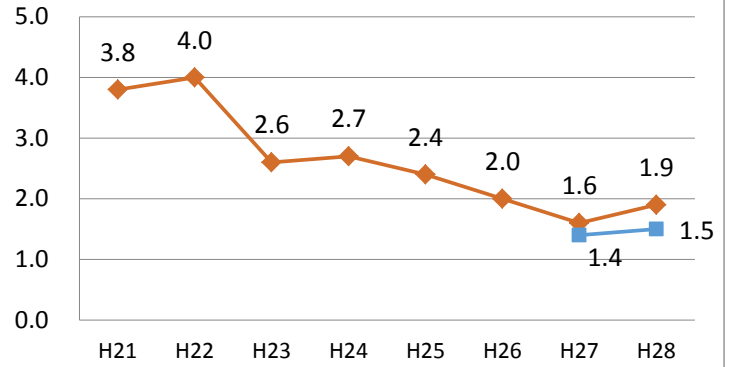
(年度)

肺がん検診受診率



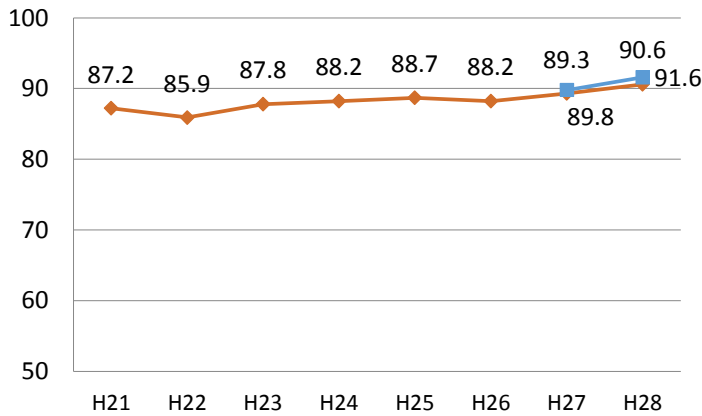
肺がん検診要精検率

3.0%以下



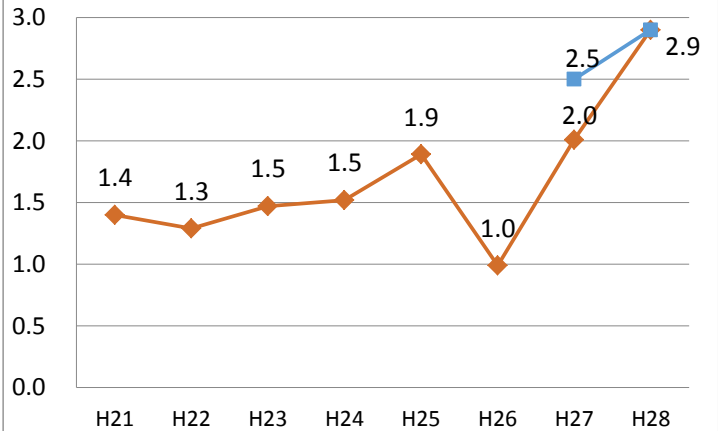
肺がん検診精検受診率

70.0%以上



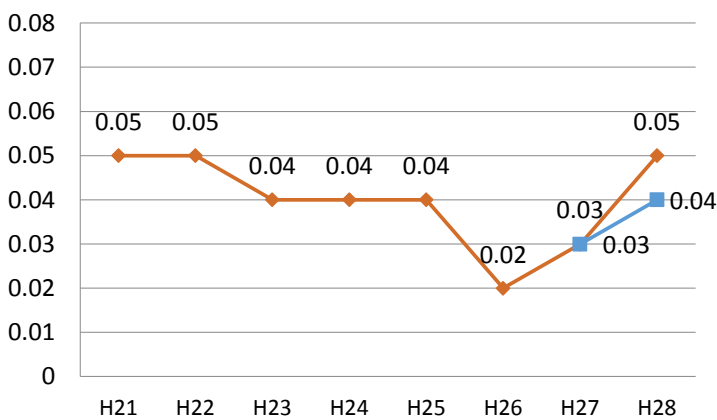
肺がん検診陽性反応適中度

1.3%以上



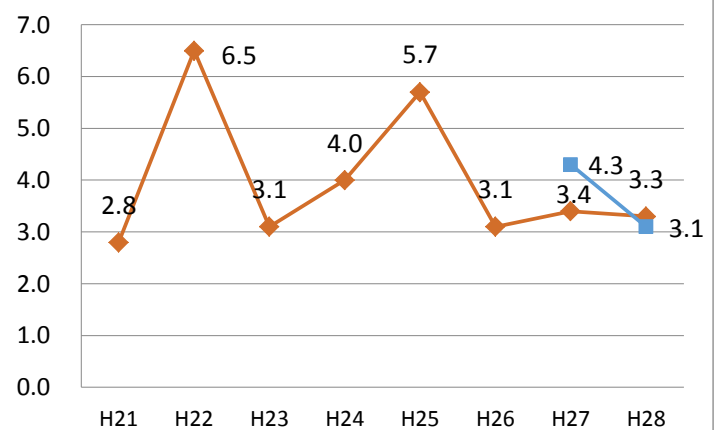
肺がん検診がん発見率

0.03%以上



肺がん検診未把握率

10.0%以下

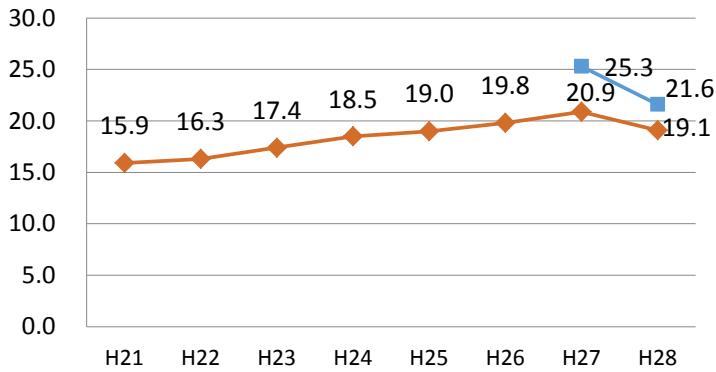


◆ 40歳以上

■ 40~74歳 (検診受診率: 40~69歳)

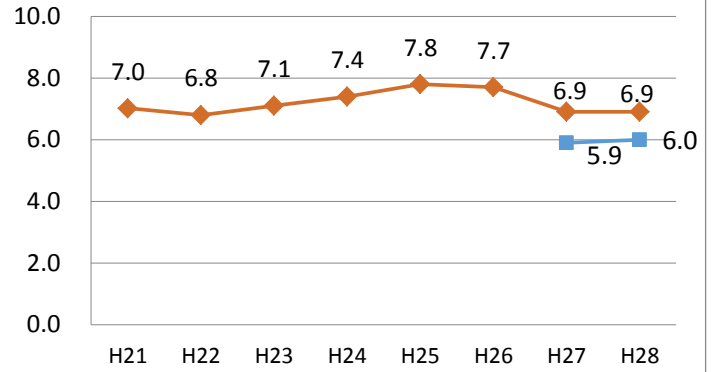
(年度)

大腸がん検診受診率



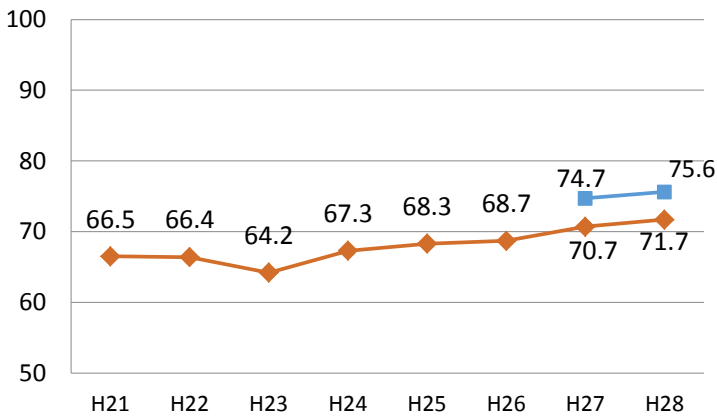
大腸がん検診要精検率

7.0%以下



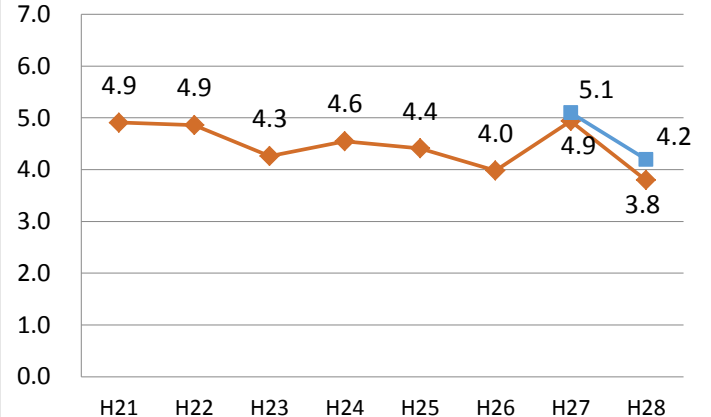
大腸がん検診精検受診率

70.0%以上



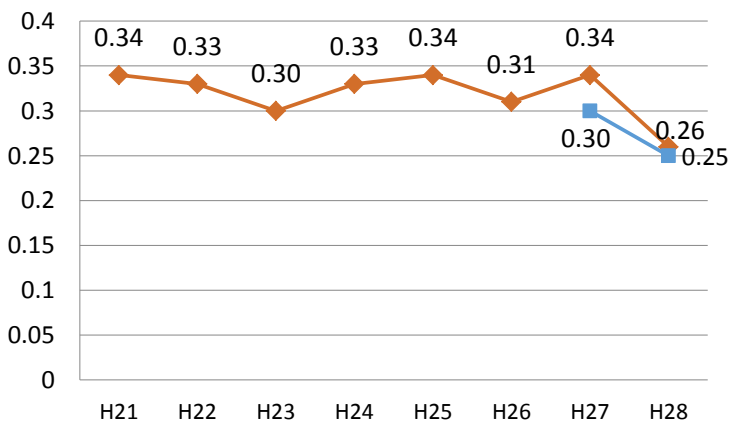
大腸がん検診陽性反応適中度

1.9%以上



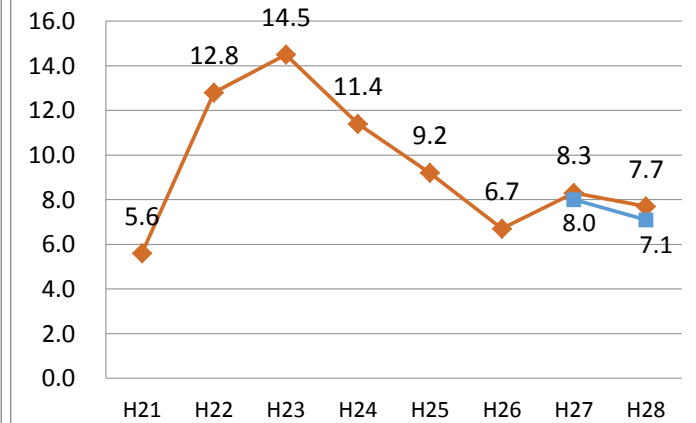
大腸がん検診がん発見率

0.13%以上



大腸がん検診未把握率

10.0%以下

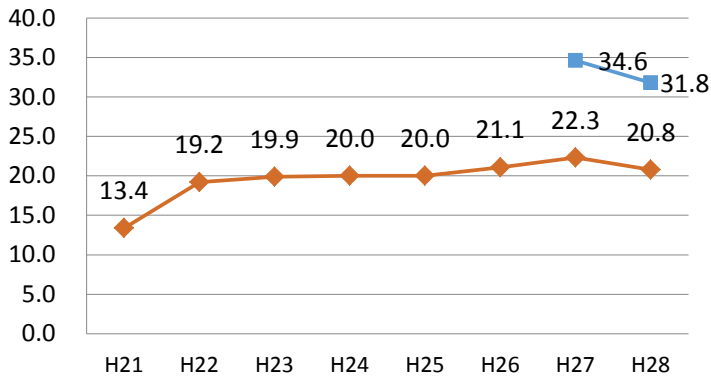


◆ 40歳以上

■ 40~74歳 (検診受診率:40~69歳)

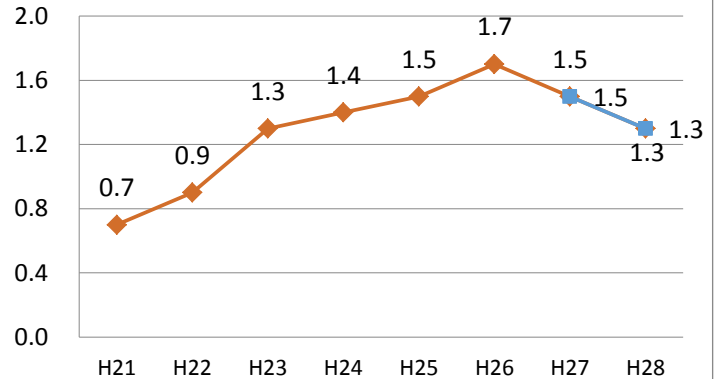
(年度)

子宮がん頸がん検診受診率



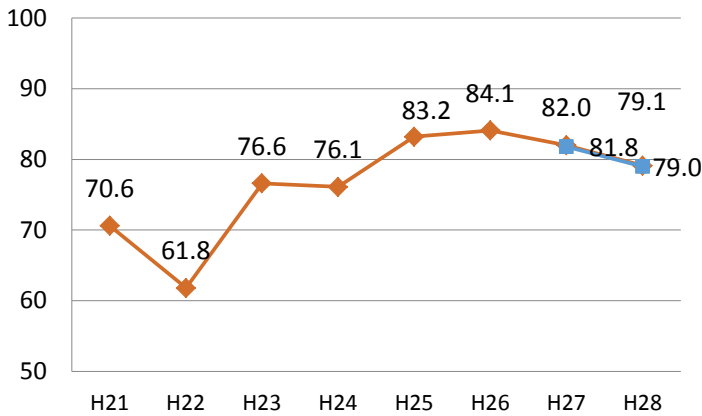
子宮頸がん検診要精検率

1.4%以下



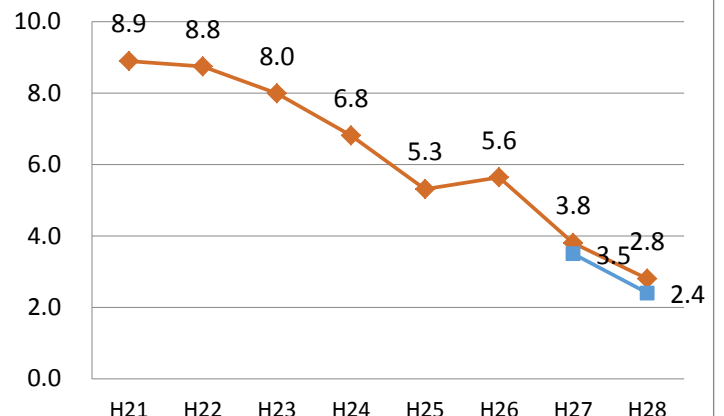
子宮頸がん検診精検受診率

70.0%以上



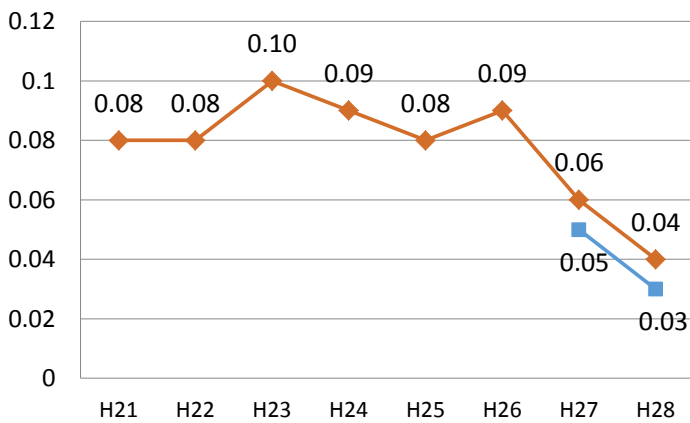
子宮頸がん検診陽性反応適中度

4.0%以上



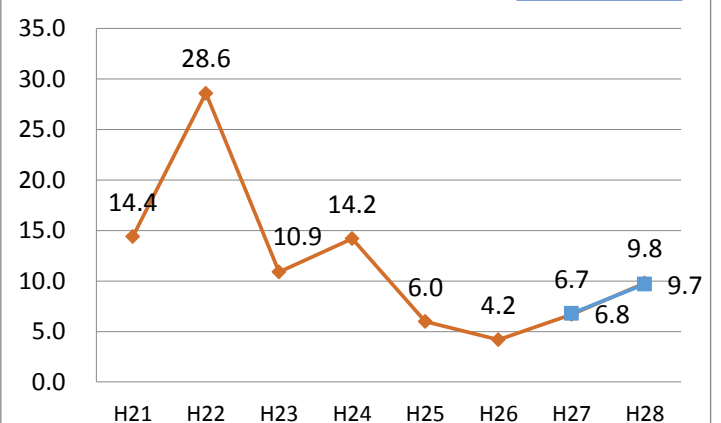
子宮頸がん検診がん発見率

0.05%以上



子宮頸がん検診未把握率

10.0%以下

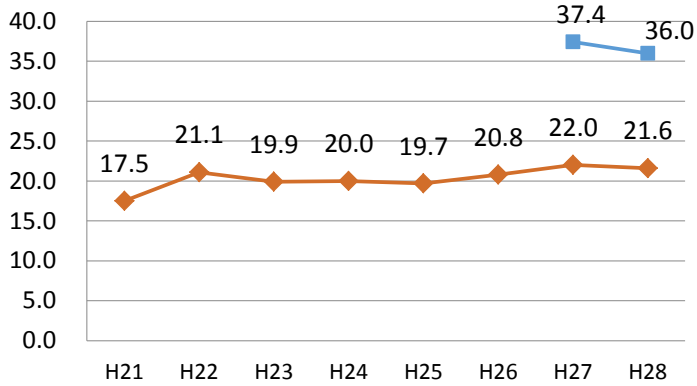


◆ 20歳以上

■ 20~74歳 (検診受診率: 20~69歳)

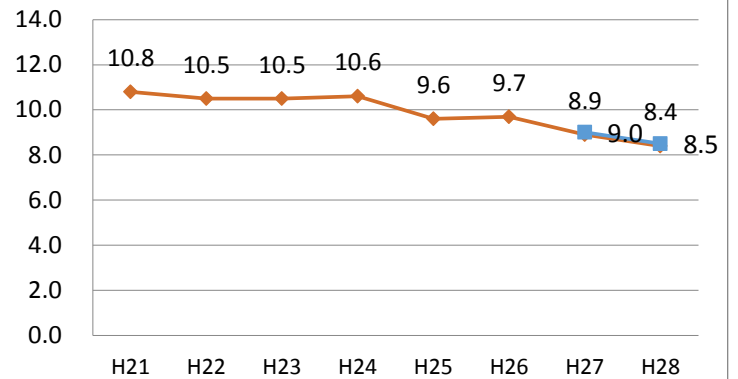
(年度)

乳がん検診受診率



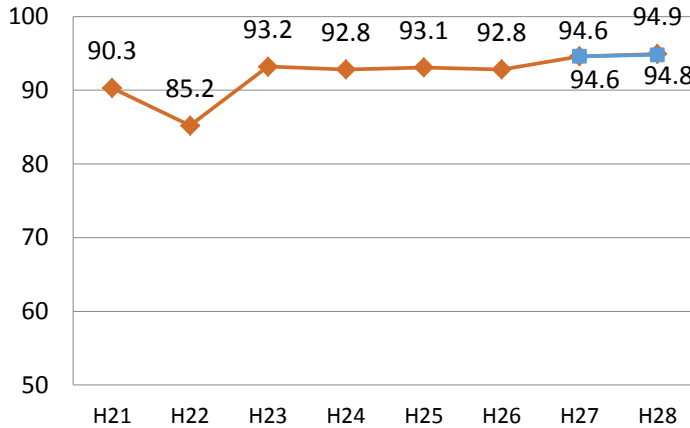
乳がん検診要精検率

11.0%以下



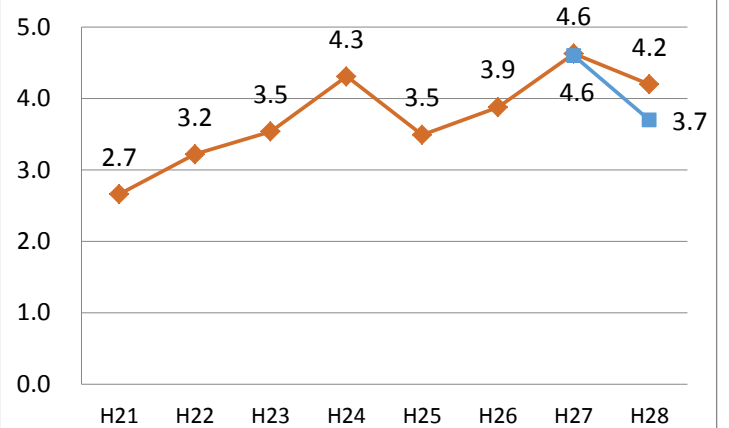
乳がん検診精検受診率

80.0%以上



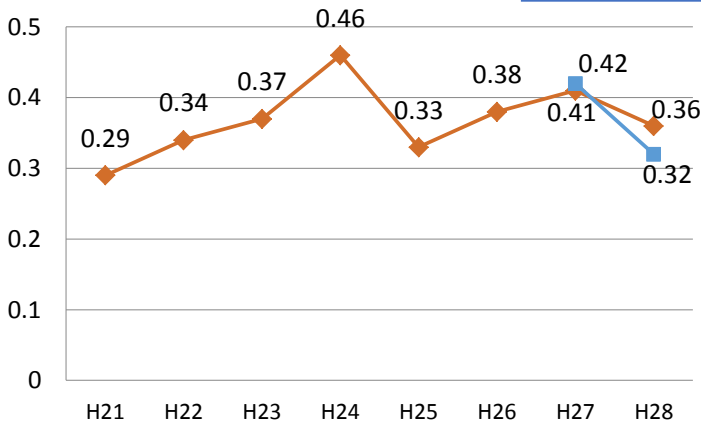
乳がん検診陽性反応適中度

2.5%以上



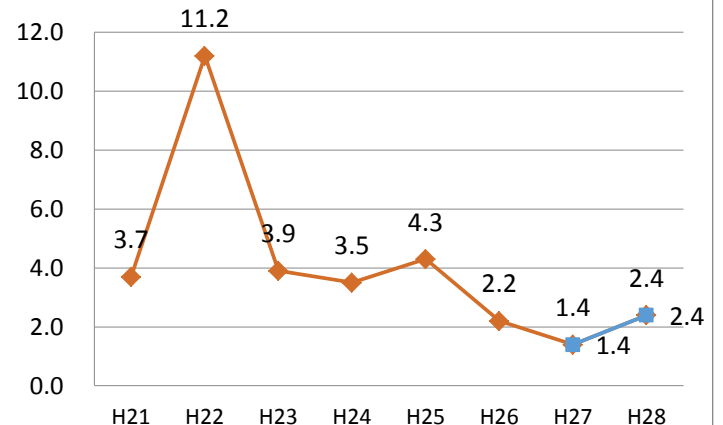
乳がん検診がん発見率

0.23%以上



乳がん検診未把握率

10.0%以下



◆ 40歳以上

■ 40~74歳 (検診受診率: 40~69歳)

(年度)